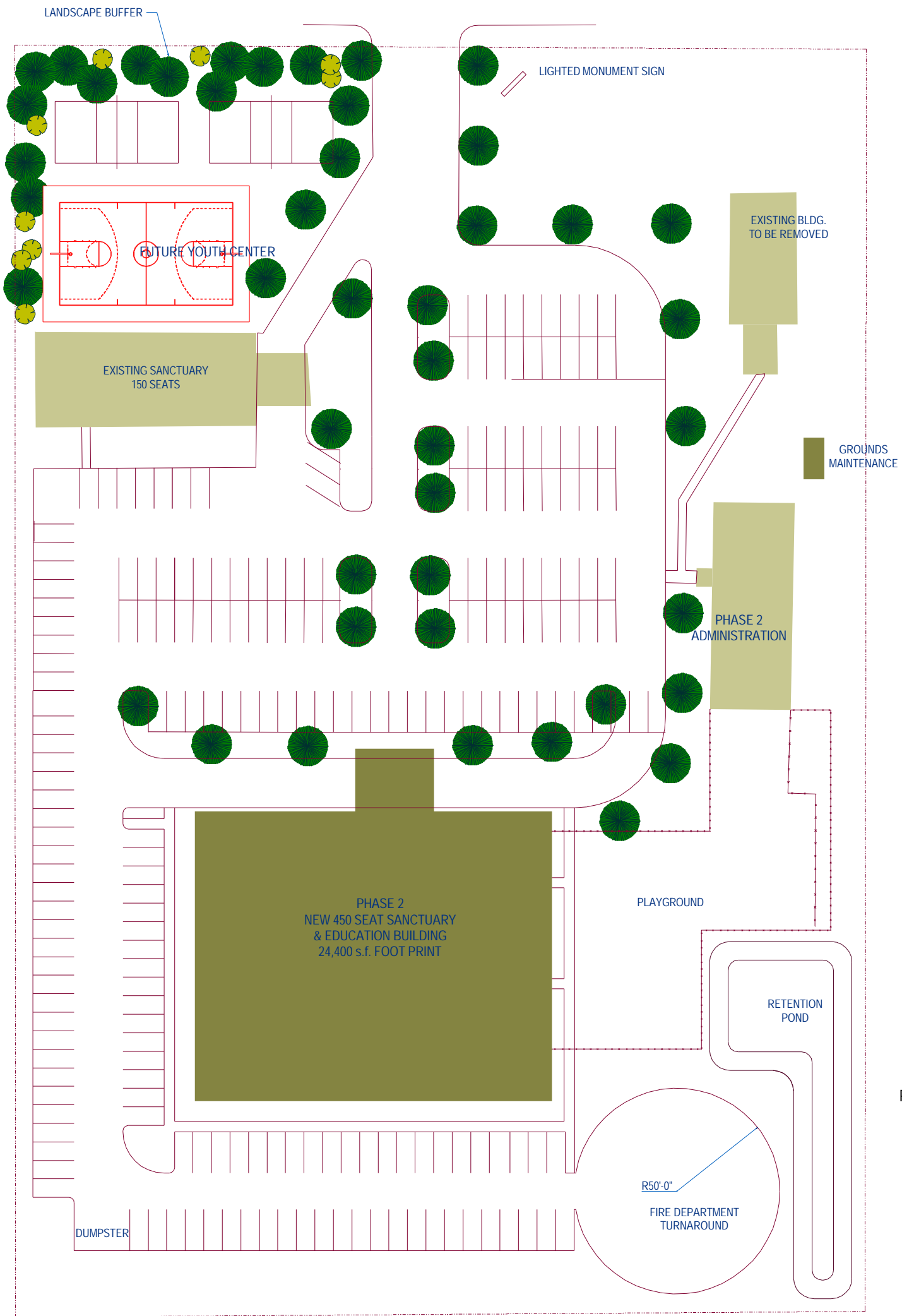


# COLLEGE PARKWAY



## PARKING CALCULATIONS:

EXISTING SANCTUARY	
150 SEATS (EST.) = 50 PARKING SPACES REQ'D.	
PROPOSED SANCTUARY	
450 SEATS (EST.) = 150 PARKING SPACES REQ'D.	
TOTAL ESTIMATED PARKING REQ'D.	= 200 SPACES
TOTAL PARKING SPACES AS DESIGNED	= 208 SPACES

